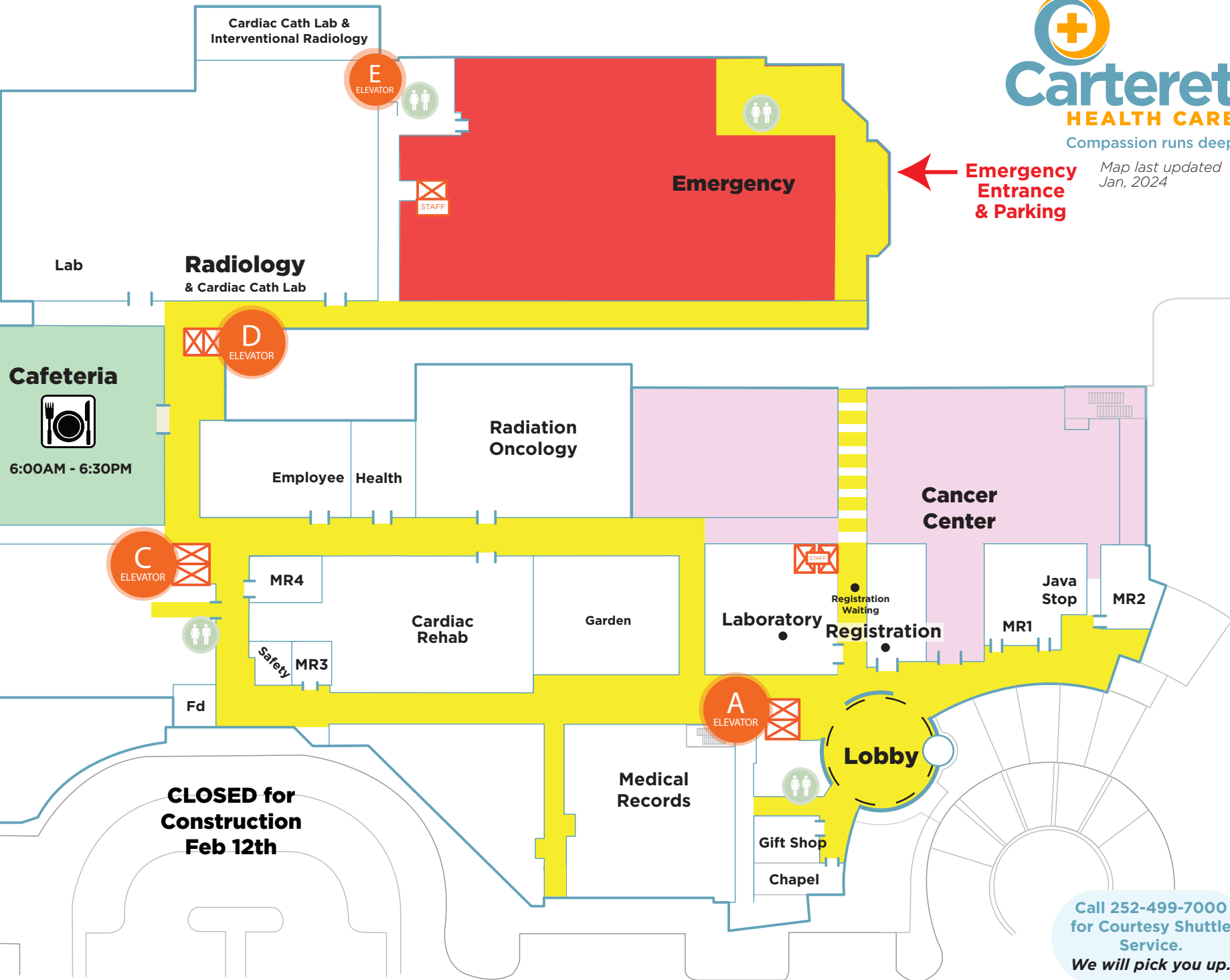


Bridges Street



Map last updated Jan, 2024

Emergency Entrance & Parking



35th Street

FLOOR 1

Arendell Street



Parking

Call 252-499-7000 for Courtesy Shuttle Service. We will pick you up.

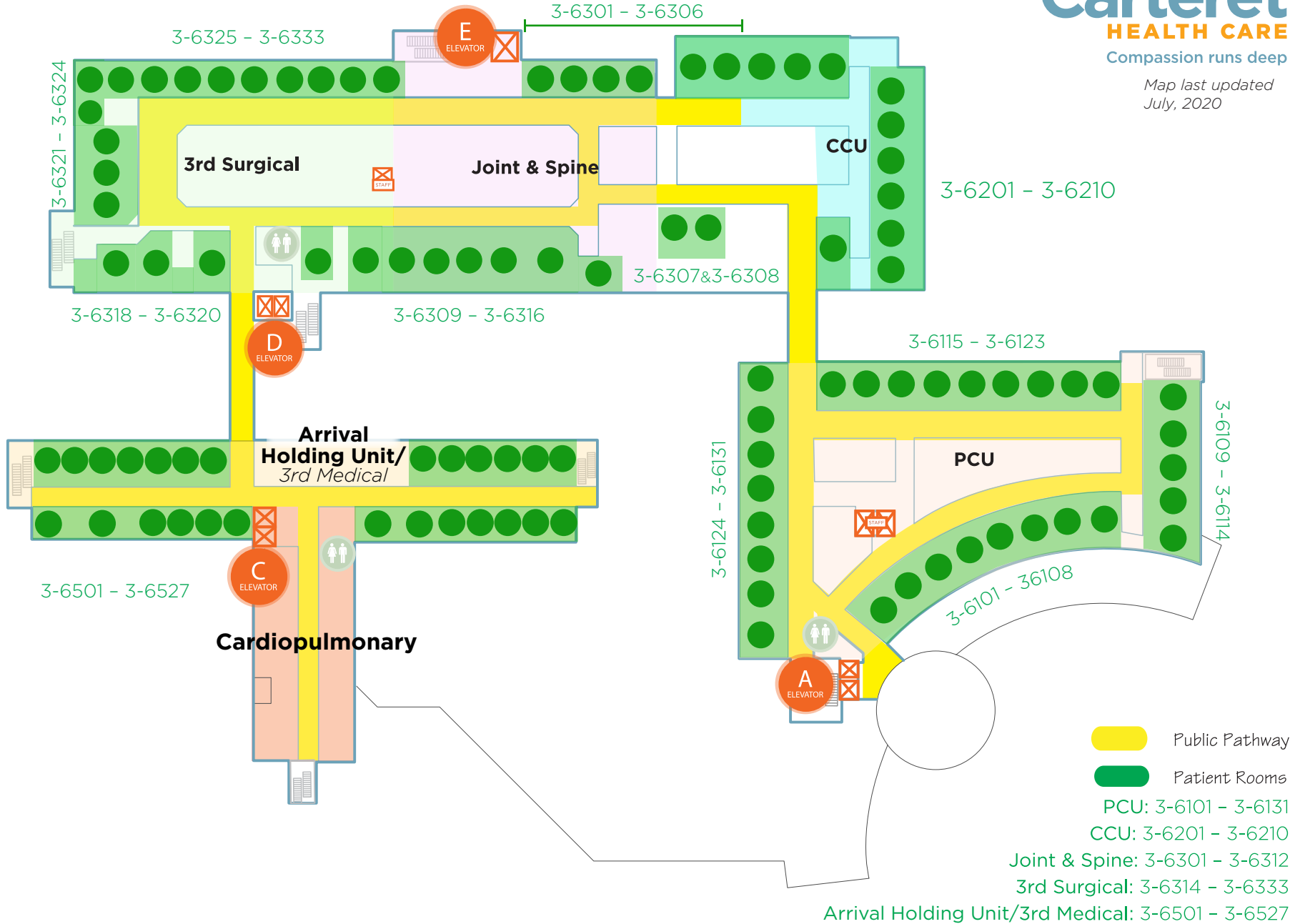
Public Pathway

FLOOR 2

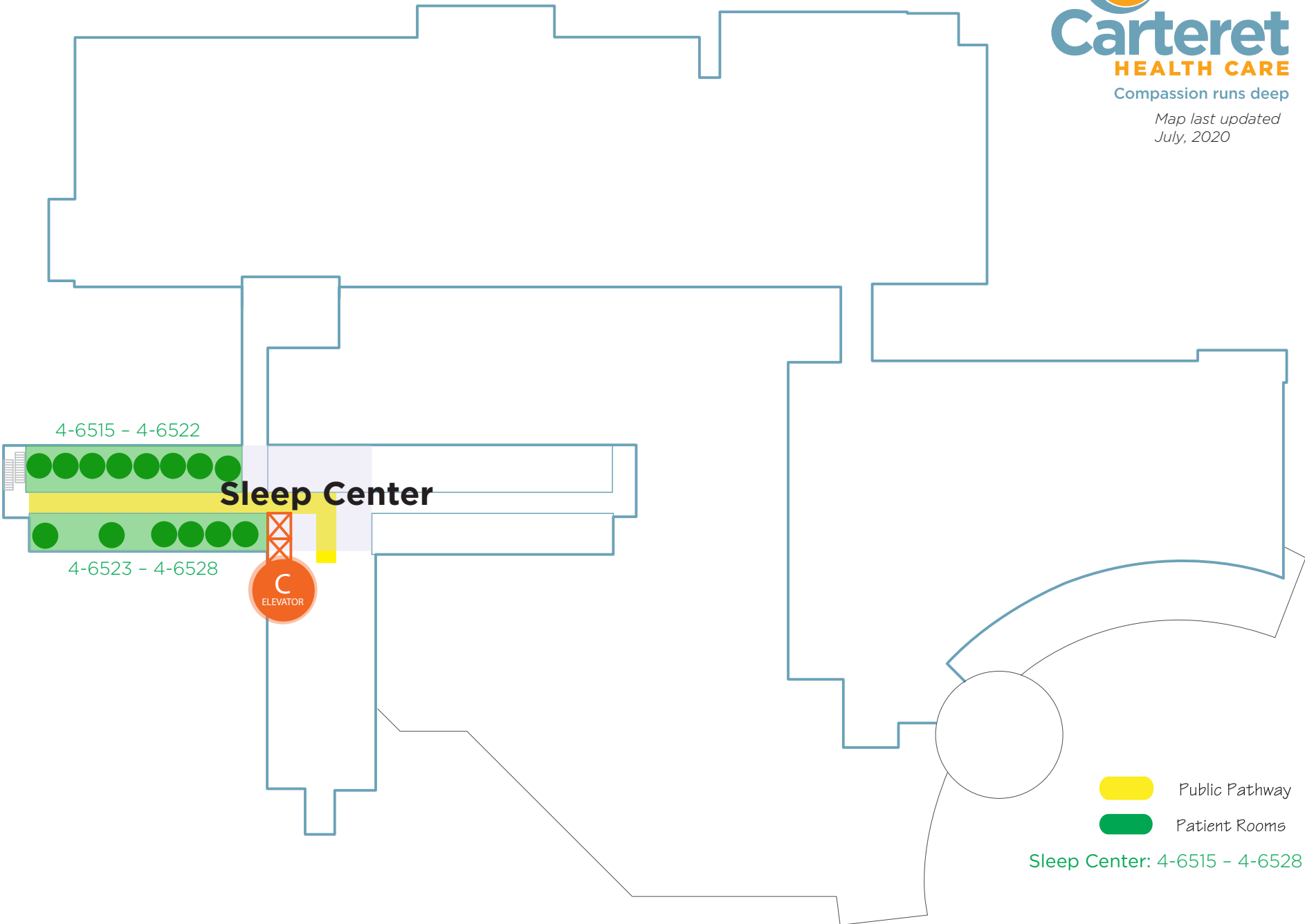




 Public Pathway
 Patient Rooms

2nd Medical: 2-5001 - 2-5018
Post-Partum: 2-5101 - 2-5110
Birthing Center: 2-5111 - 2-5119
Pediatrics: 2-5329 - 2-5333



FLOOR 3



-  Public Pathway
-  Patient Rooms

Sleep Center: 4-6515 - 4-6528